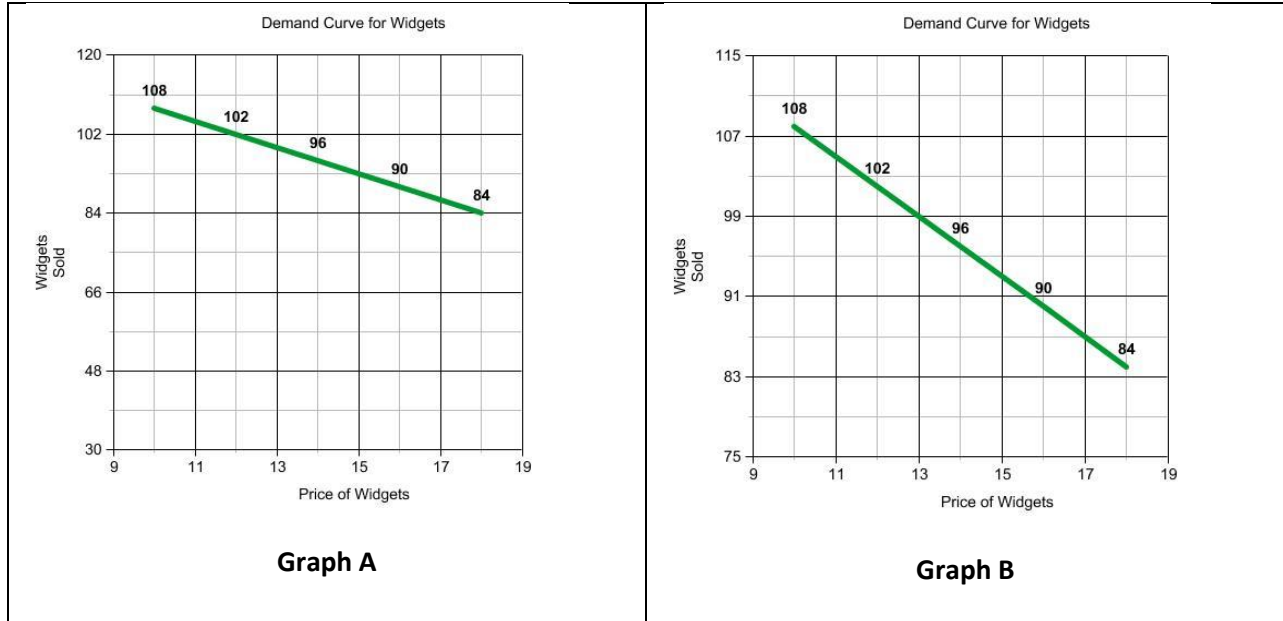


Unit 1 – Block 1



1. Use the given graphs to fill in the table.

Number of Widgets Sold			
Price of widget	\$12	\$15	\$18
Graph A			
Graph B			

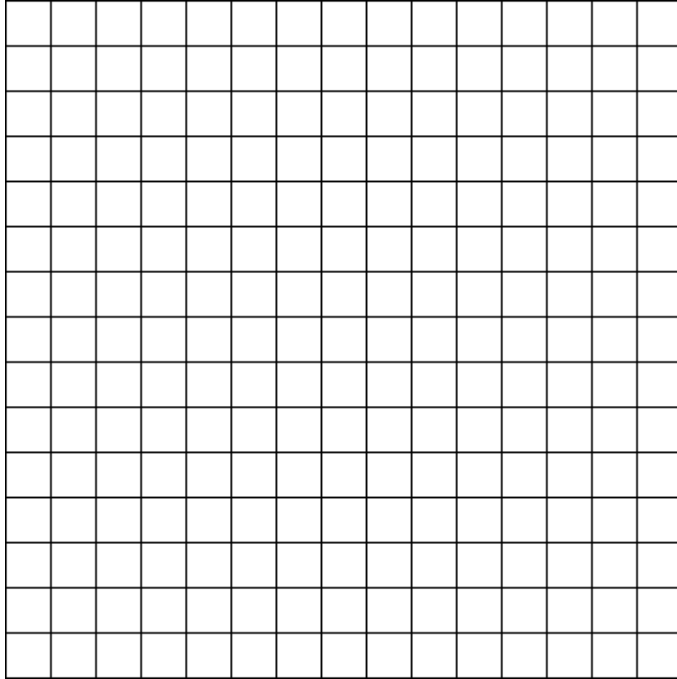
2. To sell 96 widgets, the price that needs to be charged is \_\_\_\_\_. Justify your answer.

3. Look at the horizontal and vertical scales for each graph. Explain the similarities and the differences.

4. The table to the right shows the relationship between the time spent making widgets and the number of widgets produced.

Time spent making widgets (hours)	Number of widgets made
0.5	12
1	18
1.75	21
2.5	42
4	62

a. Create a neutral graph to present the data.



b. Create a graph of the data that appears to show that increasing the amount of time making widgets has a significant increase in the number of widgets made.

