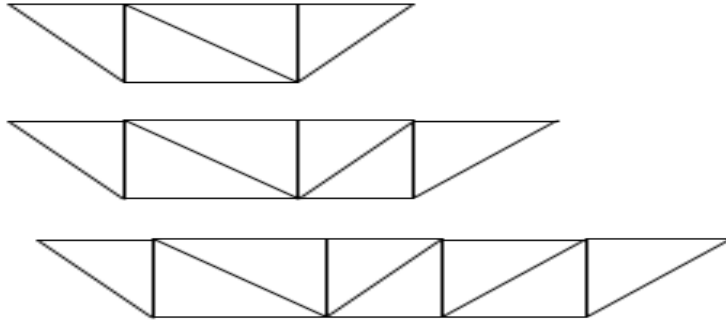
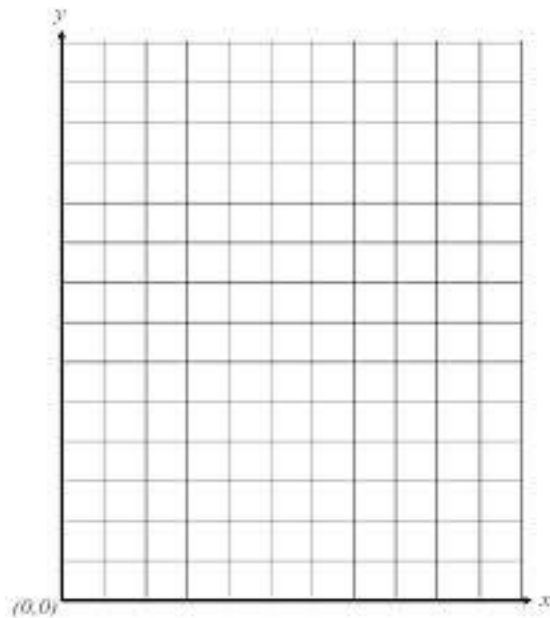


The diagrams below show a new born, 1 day old, and 2 day old 'worm' made from triangles.

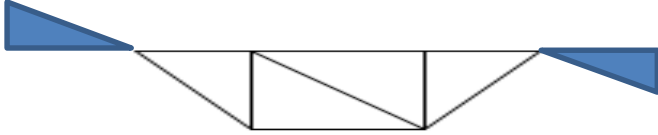


1. Make a graph of your numerical representation.  
Scale and label the graph.



2. Notice that the graph of  $y = 2x + 2$  is continuous.
  - a. What are the domain and range of the mathematical function?
  - b. The worm length situation is a discrete situation. What are the domain and range of the function that models this situation?

3. Create each of the following representation of the relationship between the age of the worm and the length of the worm *for this new design*.

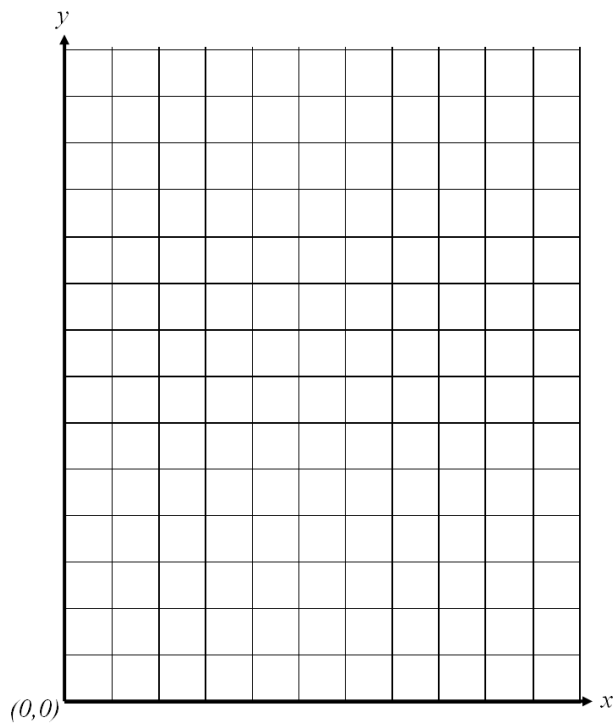


a. Numerical representation

Day	Tiles used to represent length of worm
1	
2	
3	
4	

b. Verbal representation

c. Graphical representation



d. Symbolic representation